

NAME: _____

DATE: _____



Basic English Dialogs



TIME



- Listen and choose the correct time for each short conversation.

<p>DIALOG 1</p>  <p>get up</p>	<p>Interviewer: What time do you get up, Tom? Tom: I usually get up at about _____. Interviewer: Why do you get up so early? Tom: Well, it takes me almost an hour to get to school.</p>	<p>5:45 6:45 6:15</p>
<p>DIALOG 2</p>  <p>lunch</p>	<p>Interviewer: And what time do you eat lunch? Tom: I always have lunch at _____. Interviewer: What do you like to have for lunch? Tom: I like to have a sandwich, or maybe pizza.</p>	<p>1:00 12:30 12:00</p>
<p>DIALOG 3</p>  <p>go to bed</p>	<p>Interviewer: Finally, what time do you go to bed? Tom: Well, my mom makes me go to bed very early. Interviewer: Oh, really? What time exactly? Tom: She makes me go to bed at _____. Interviewer: It sounds like you have a good mom!</p>	<p>9:45 8:30 9:30</p>

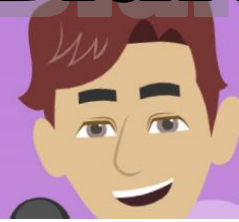
NAME: _____

DATE: _____

Basic English Dialogs



TIME



- Work with a classmate and continue each dialog. Write in the spaces below.

DIALOG 1 (What time do you get up?)

Interviewer What time do you get up, Tom?

Tom I usually get up at about quarter to six. (5:45)

Interviewer Why do you get up so early?

Tom Well, it takes me almost an hour to get to school.

Interviewer

Tom

DIALOG 2 (What time do you eat lunch?)

Interviewer And what time do you eat lunch?

Tom I always have lunch at noon. (12:00)

Interviewer What do you like to have for lunch?

Tom I like to have a sandwich, or maybe pizza.

Interviewer

Tom

DIALOG 3 (What time do you go to bed?)

Interviewer Finally, what time do you go to bed?

Tom Well, my mom makes me go to bed very early.

Interviewer Oh, really? What time exactly?

Tom She makes me go to bed at half past nine. (9:30)

Interviewer It sounds like you have a good mom!

Tom

Interviewer

Aim Vocabulary practice; Listening practice; Speaking practice
Level Beginner to Elementary

ANSWER KEY

DIALOG 1 (What time do you get up?)

Interviewer: What time do you get up, Tom?

Tom: I usually get up at about **quarter to six** (5:45).

Interviewer: Why do you get up so early?

Tom: Well, it takes me almost an hour to get to school.

* * * *

DIALOG 2 (What time do you eat lunch?)

Interviewer: And what time do you eat lunch?

Tom: I always have lunch at **noon**. (12:00)

Interviewer: What do you like to have for lunch?

Tom: I like to have a sandwich, or maybe pizza.

* * * *

DIALOG 3 (What time do you go to bed?)

Interviewer: Finally, what time do you go to bed?

Tom: Well, my mom makes me go to bed very early.

Interviewer: Oh, really? What time exactly?

Tom: She makes me go to bed at **half past nine**. (9:30)

Interviewer: It sounds like you have a good mom!

ACTIVITY SUGGESTION

- *After they extend the dialogs on page 2, ask your learners to practice their conversations in pairs! Have one or two pairs perform for the entire class!*

